



Kōke'e Connections

Hui o Laka Membership Newsletter

SEPTEMBER 2020

HUI O LAKA ANNUAL MEMBERSHIP MEETING

Due to constraints on gatherings, Hui o Laka will hold its annual meeting virtually via a zoom meeting platform on Sunday, September 27, 2020 at 1pm (HST). The purpose of the meeting is to elect trustees and accept reports for FYE 2020. A large percentage of members receiving this newsletter by email, but there are still many that don't. If those of you that normally received mailed hardcopies of this newsletter want to attend, please provide our staff with your email for the meeting. We will be sending the meeting link via email only. The U.S. Post Office has noticeably slowed down recently so this newsletter article will serve as the meeting notice. Send your request by email, info@kokee.org, with the subject line "Annual Meeting" or by phone: (808) 335-9975. You may change your communication information or preferences at any time.

Renovated Museum Reopens

Kōke'e was very quiet. The absence of 300+ visitors each day to Park Headquarters left many chickens wondering where their next meal is coming from! But we are now open.

The Kōke'e Natural History Museum reopened on July 3 with new shop manager Pi'ilani Palama at the helm. Pi'ilani comes to us with many years of experience in the hospitality industry right here on Kaua'i. Her specialty is organization and aloha. Welcome Pi'ilani!

In an effort to use the forced closure time positively, we made some changes in the museum and prepared for the required social distancing for visitors. Before the changes though, much cleaning and re-painting had to take place. The donation of two almost new dehumidifiers by Kathy Richardson made a huge difference there and in storage and several days of washing walls and ceilings with vinegar has destroyed all traces of mildew.

Starting with major cleaning, we moved into repainting and renovations of exhibits. For many years Kōke'e Museum has been a free resource for visitors to the park, and though gift shop purchases, has supported the museum expenses. Hours spent each day dispensing trail information detracted from Hui o Laka's real mission which is interpretation. With fewer visitors anticipated, we are using this as an opportunity to redirect our focus toward the forest, the local community and educating our youth.

Funding for museum upgrades done over the past few years was provided through the Waimakua Foundation, Waimakua Foundation / Mary S. Rice, Sam W. Wilcox Trust, E.H.W. Broadbent Foundation, and donations made in memory of Gale F. Carswell.

Temporary museum hours are limited to four days a week, Friday through Monday from 11am to 3pm until we see a significant increase in visitors. Weekends may see slightly longer hours. The direct phone number to the museum is (808) 335-3353 during museum hours. Otherwise, the office staff at (808) 335-9975 and can answer any questions regarding the museum. The email to order any of our merchandise is shop@kokee.org.



Museum Upgrade Work

Left: Museum volunteers and staff on a workday. Clockwise from the top left: Scott Topp patching floor pukas, Kay Koike sorting the shell collection, Pi'ilani Palama restocking the shop, and Billi Smith painting the hard to reach spots. Right: Wheelchair ramp foundation under repairs.



CALENDAR

Museum Programs Tentative Schedule & Activities

September Theme

Respect the Forest

September 20 – Grab-n-Go activities
September 27 – Forest Weeding 1-3pm.
RSVP

October Theme

Eo e Emalani - Queen Emma

October 4 – Grab-n-Go activity pickup at museum 11am-3pm.
SATURDAY, October 10 - Eo e Emalani Goes Virtual on YouTube. www.kokee.org
October 18 – Forest Weeding 1-3 pm.
October 25 – Talk Story about Queen Emma in the Kokee Museum 1-2 pm.

November Theme

Kōke'e Forest Birds

November 1 – Grab-n-Go activity pickup at museum 11am-3pm.
November 8 – featuring Kaua'i Forest Bird Recovery Project 1-2pm.
November 15 – Forest Weeding 1-3pm.
November 22 – Grab-n-Go Forest Bird Activity pickup from 11am-3pm.
November 29 – Forest Bird Activity Showcase from 11am to 3pm.

December Theme

Kōke'e Evergreens

SATURDAY, December 5 - ANNUAL Wreath Making by reservation only. \$25 for non-members. \$10 for members. Limited space. Bring clippers, embellishments, masks, and lunch. **10am to 3pm**
December 6 – Grab-n-Go activity pickup at museum 11am-3pm.
December 13 – Tour the Meadow – Meet the Evergreens 1-2pm.
December 20 – Bird Feeder Pine Cones Activity Demonstration 1-2pm.

Further information: 808 335-9975 or the museum 335-3353 or email info@kokee.org.

Sundays at the Koke'e Museum is funded in part by



A 1964 Diorama Restored for a New Generation



Photographs from left to right: Display before restoration. Director Chris Faye and artist Dan Cruces flank the installed branch.

A highlight of the museum upgrades is the restoration of the forest bird diorama dated September 22, 1964 and created by Katherine O. Baldwin, Mary M. Forbes, and E.H. Christopher. The birds were supplied by hunters who would occasionally find them dead on the forest floor. All the individual pieces of the central display of 'i'iwi and apapane were cleaned and rewired into place. Even the 'ōhi'a leaves were individually painted and reattached. The new display is lifelike. Seeing so many birds in a single branch was a common sight when the display was first made. It is a reminder of how quickly endemic species can die out. Although they still can be seen, apapane are less numerous at Kalalau, and the 'i'iwi are rapidly dwindling and retreating. Both species as well as all the endemic forest birds are vulnerable to avian malaria that is carried by mosquitos. Due to global warming mosquitos are now able to breed in higher elevations.



The 32nd annual Eō e Emalani program follows the format established in the live event. Performers and hālau will be participating by providing video honoring Queen Emma. The whole program will be released on Saturday, October 10, 2020. Learn about Hawai'i's Queen Emma and her inspiring story and legacy. Participating hula hālau honor Queen Emma, her momentous journey to the Kōke'e, and her life and accomplishments. Each performance for the Queen will be creative and personal despite the drawback of not being at Kōke'e in person.

Lesah Gail Merrick will reprise her role as Queen Emma with footage from the 2019 Queen's entry into the meadow on horseback during this festival full of love and aloha. Sabra Kauka will be the event's host. She portrayed Queen Emma in the early days of the event and also in a play of the same name.

Step back in time to 1871, as Queen Emma and her entourage arrive on horseback with hula hālau greeting her and

paying homage to her life and accomplishments. The day was full of beauty, as the mountain forests echoed with sounds of Hawaiian music and chants. The Dowager Queen Emma, despondent over the loss of her husband and only child, came to Kaua'i to regain her health and spirit. She found it in her journey to Kōke'e with over 100 companions, eager for an adventure with their Queen. Along the way, she called for her court chanter to offer oli, chants of appreciation for the magnificence landscape and all within. The delays turned the journey into an overnight stay in the chilly and soggy Alaka'i Swamp. It was the Queen who cheered up her companions with tales and song into the night. She blossomed into her former confident and cheerful self. In the morning, her heart was lifted by the beautiful view at the end of the trail overlooking Wainiha, Hanalei, and Kilauea. It was the breathtaking scenic overlook, "Kilohana," she heard about so many times from her husband and brother-in-law. On her return many mele were composed praising the Queen's courage to undertake the difficult trek in the January cold. The Queen's story is celebrated to this day.

Links to the event on Youtube and the pdf program will be posted earlier in the week prior to the event on Hui o Laka's website and on Facebook: Hui o Laka – Events and Kōke'e Museum New! Plan your watch parties now!

The event can be viewed any time after the launch date.

Eō e Emalani is brought to you by Hui o Laka and...

HAWAII TOURISM

And here it is... Our Virtual Auction!

Through the generous gifts of individuals and companies, we are pleased to offer a wonderful variety of items to support Virtual Eō e Emalani Alaka'i Festival Silent Auction. All are welcome to participate in our easy and exciting online auction. Bids are updated instantly and fresh new items are added daily. The site is reached at <https://www.32auctions.com/KokeeVirtualEmalani2020>.

The online bidding closes on Saturday, October 10, 2020 at 10:00 a.m. (Hawaiian Pacific Time). Thank you for your continued support in keeping our museum doors open. All proceeds will support Hui o Laka and Kōke'e Natural History Museum.

On Kaua'i, winners may pick up prizes at Tire Warehouse, Lihu'e, Kaua'i, at 3028 Aukele Street in Lihu'e, on Wednesday, October 14, 2020 from 8:00 a.m. – 1:00 pm. Call Lorraine Wichman (808) 651-7866 or contact wichmanpoipu@msn.com

For shipping information requests, please call Hui o Laka (808) 335-9975 or email info@kokee.org. Please put "Silent Auction" in the subject line. Shipping is available through USPS, UPS, or FedEx and rates will vary. Hui o Laka is not responsible for any costs involved with shipping.

Moving forward with a little help!

We have some partners to help us to provide educational opportunities for our community and assist children and parents in their virtual educational journey.

Sundays at Kōke'e Museum

Weekly family activities are planned at the Kōke'e Museum every Sunday. We have a monthly theme with grab-n-go activities for elementary age kids. They need to be present. These activities are provided free through a \$2,500 grant from Corteva Agrisciences. We are looking for additional materials to provide in the grab-n-go and onsite activities to fit Kōke'e themes. These are intended for families in our community to connect with the forest and make use of the natural history exhibits in the museum.

Kōke'e Forest Journal Activities

This is a free series revolving around journaling and observing nature. We hope to have the first activities online in November with a range of activities for a wide range of ages including adults. Please share your journaling activities with us!

New Websites

Hui o Laka has just received a \$7,500 grant from the County of Kauai's KUPAA Small Business Boost Funds. Going back to our natural history museum roots, Hui o Laka will be revamping its website to do a better job of customer service and supplement the physical sites by providing educational activities and online shopping.

Future Ideas

We have ideas for additional activities using our website and social media but would love to hear yours. We don't have the staff for major expansion or skills to pull off anything complicated ourselves. We would like to involve budding videographers, artists, scientists, and more that are into natural history, the Hawaiian forest and of course Kōke'e.

Email: director@kokee.org



NEW FRIENDS

Dan Abidilla and Team Rubicon has had chainsaw training sessions at the CCC Camp. They made short work of our wind storm-related debris and invasive growth. The group is based in Kekaha. Members are community-minded volunteers that are ready for any emergency or disaster.

Nature Trail Restoration

Beginning in late September and October, the Nature Trail will be under reconstruction. With a contract supported by Hawai'i Tourism, Hui o Laka will be repairing sections of the trail, filling tree roots, and delineating the trail. Some downed trees will be cut up and used in the process. Some plantings with assistance from Kōke'e Resource Conservation Program will be made to fill in areas where trees have come down in the past year. Signage will be put in place towards the end of the project in late November.

Volunteers are being sought to assist with the removal of invasive weeds – the usual – honeysuckle, blackberry, nightblooming jasmine, and grasses on the section of the trail between the museum and pavilion as part of our Kōkua Kōke'e program. We have some handtools and gloves. Social distancing would apply and masks required if working close together. This is not a recommended activity for children under age 10. We will provide cold bottled water. The planned two to three hour work sessions are on the following Sundays starting at 1pm weather permitting.

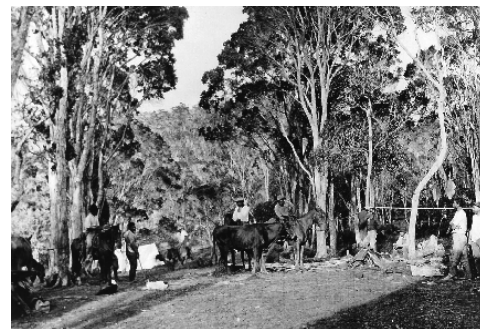
September 27

October 18

November 15

Please call to participate 335-9975 or email: director@kokee.org. We can take requests for small groups in limited numbers as allowed under the Mayor's rules in affect at the time.

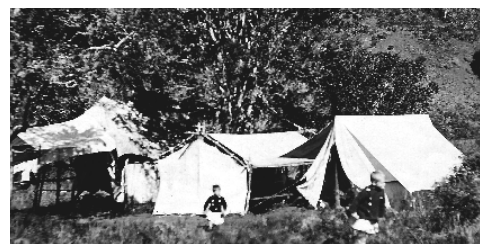
Kōke'e Long Ago



Knudsen Ranch

Until 1907, Kōke'e was part of a massive leased ranch owned by the Valdemar Knudsen and family. As the lease

approached its end, Augustus and Eric Knudsen lobbied to protect the area as a forest preserve for public recreation.



Ewart Camp

Prior to the opening up of the area for leases, the Knudsens allowed extended family and friends campsites. George Ewart Jr. was the supervising engineer for the Kōke'e Ditch and brother-in-law to Han Peter Faye, manager at Kekaha Sugar. Faye was Valdemar Knudsen's nephew.



Cabins at Kōke'e

In the 1920s, a macadamized road was made to Kōke'e and leases auctioned off for summer use. Charles Dole was one of the original leaseholders at Kōke'e. This is the cabin he built for his extended family to enjoy the cool Kōke'e summers.

Photographs from family collections.

Hui o Laka Membership

Membership is very important to our organization and during these tough times has been a lifeline. Listed here are memberships at the patron level or higher from April 1, 2020 to August 31, 2020.

PATRON MEMBERS

Koa Members

David & Sherry Walker
Heidi Schroeder
Heionalani Wyeth
Rebecca Dietzel
Owen Moe
Robert Kinzie III
Nancy Merrill
Sabra Kauka
Dana Kaohelauii
Patrick & Leah Periera
Iwa & Darrell Fu
T. Timmons & P. Fallbeck
Jack & Bev Harter
Tim & Cathy McKenna
Chucky & Pammy Chock
Patrick Powaser
Teri Sakai
Patsy Nitta
Robert & Diana Peity

'Iliau Member

Thomas King, Jr.

Lama Member

Puna Dawson

UNRESTRICTED DONATIONS

Wendy Wichman
Joan Pratt
Kay S. Koike
Gaylord & Carol Wilcox

**In Memory of Sharp & Rose Ibara,
Summer Rose Ibara, and Wilfred Ibara**
Patsy Nitta

In Memory of Bill Laidlaw

Lucia Laidlaw

In Memory of Marsha Erickson

Anonymous

ENDOWMENT FUND

Joan Pratt

GRANTS & PROGRAM FUNDING

\$2,500

Corteva Agrisciences

\$7,500

KUPAA Small Business Boost Program
County of Kaua'i Small Business Relief Program
funded by a Coronavirus Relief Funds(CRF)
Federal Subaward obtained from the State of
Hawai'i.

CARES ACT AWARDS

\$12,500

HI Humanities Cares Act Grant
Hawai'i Council for the Humanities funds
granted from the National Endowment for the
Humanities (NEH) and the CARES Act

\$53,800

CARES Act Payroll Protection Program Funds

\$150,000

SBA Economic Injury Disaster Loan

CONTRACT AWARDS

Hawai'i Tourism Authority

\$20,000 Kōke'e-Nature Interpreted
\$5,500 Eō e Emalani

VOLUNTEER SERVICES & NEEDED EQUIPMENT

Dehumidifiers

Kathy Richardson

Tree Trimming

Team Rubicon

Roof Extension on Mess Hall

Roger Jenkins

Museum Exhibit Volunteers

Pono Pacific crew
Scott Topp
Billi Smith
Kay S. Koike
Frank O. Hay

Education Committee

Billi Smith
Kay S. Koike
Diane D. Faye

Kōke'e Membership Notes

Aloha to a long-time member and volunteer Bill Laidlaw. For many years Bill and his wife Lucia spearheaded the annual Audubon Bird Count along the coastline of West Kaua'i. Bill also helped glaze windows that now grace the renovated CCC Camp. Bill died in March in Calgary and is greatly missed. Our deep condolences to his wife Lucia and their two sons.

MEMBERSHIP

___ \$12 Maile Student
___ \$25 Mokihana Individual
___ \$50 Ha'upu Family
___ \$75 'Ohi'a
___ \$100 Koa Patron
___ \$250 Kauila Patron
___ \$500 'Iliau Patron
___ \$1000 Lama Patron

Donations

___ Unrestricted
___ Endowment Fund
___ In honor/memory of

___ Other (describe) _____

Fill out contact information so we can
send a receipt for your tax records:

Name _____

Email _____

Mailing Address _____

Newsletter will be sent by email.

Check ___ if you need to have newsletter
mailed to you.

Pay online at kokee.org or by personal check
mailed to Hui o Laka, P.O. Box 100, Kekaha,
Hawai'i 96752. Credit card payment can be
made by phone.

CCC Camp Re-Opening

Hui o Laka received permission from the State to reopen a portion of the camp for Kaua'i residents' use. Until further notice from the State, Mokihana and Orchard cabins are available to rent. We are not currently able to rent out the bunk rooms or private rooms as the kitchen and bathrooms are communal. Mokihana Cabin is \$190 per night and Orchard Cabin is \$150 per night. Hui o Laka members receive a 10% discount.

Department of Health guidelines require that you bring your own bedding, pillows, and towels. We also have to restrict non-registered guests. Please call (808) 335-9975 or use the website to make a reservation. The new Covid-19 application, photographs of the accommodations, and calendars are available at www.kokee.org. Plan ahead as most long weekends get snapped up quickly. One night deposits are required.