



# Kōke'e Connections

## Hui o Laka Membership Newsletter

AUGUST 2018

### 2018 Emalani Queen Announced

Sharalyn Kahealani Bucasas of Kekaha has been selected by Hui o Laka to represent Queen Emma at the upcoming October event. Her lady-in-waiting will be her sister Shannon Nohealani Bucasas. The following is a biography she sent to us:

“My name is Sharalyn Kahealani Bucasas and I am the daughter of Richard Bucasas and Myrnadette Heu'ihelani Shea. My grandparents on my paternal side are Tiburcio Buccat Bucasas and Mary Wahineokalani Sylva Kapo. My grandparents on my maternal side are Maynard Kahauanu Shea and Margaret Ka'onohipoalomaka Wong.

I am blessed to have a younger sister, Shannon Nohealani Bucasas, who inspires me to perpetuate our culture, educate our keiki, and add to a thriving lāhui. To my parents, mahalo for raising within us a strong sense of 'ohana and a love for our culture. We are definitely products of everything you instilled in us at a very young age. I love each of you so much. Last but not least, a little bit about what fuels my passion, it's my sons, Keolanui Kalawai'anuiakeali'i Mahaulu and Iliwa'alani Kawika Mahaulu. They are a constant reminder of the privilege I have of working with the keiki of Kaua'i, either through the Department of Education or Kamehameha Schools. I love that I am gifted with the kuleana to care for, shape, and guide the future of our lāhui each and every day.”

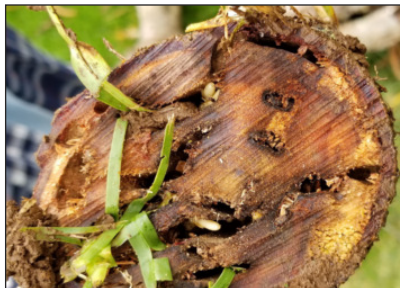


*Queen Emma wearing a riding habit.*

### End of a Koa Tree

Things look different behind the Museum. An old friend, a sprawling and very old koa tree's trunk cracked one day. After an inspection, it was deemed dangerous and ready to drop at any time. Some of its limbs were above the electric wires to the museum and pavilion and if the tree toppled, they would have landed on the roof of the museum. It took a day to bring it down and several days to cut up the wood and haul that away. A few more days were needed to clean up the Nature Trail and reroute the exit. As the tree was being cut up, we checked out the damage to the tree. The base of the trunk was hollow and the dead branches had termites. Some of the wood in the middle was still good. It was very sad to see such a beautiful tree die.

*Photos show live termites and the cracked and hollow trunk.*



### 2018 CALENDAR



Sunday, September 9

#### Annual Membership Meeting

11:00am Fellowship Membership Lunch, 12:30pm Meeting  
Kōke'e Civilian Conservation Corps Camp Mess Hall. You must be a current member to attend and that can be updated at the meeting.

Saturday, October 13

#### Eō e Emalani i Alaka'i

9am to 4pm. Queen enters the Meadow at 11am.  
No Admission. Limited parking. Reserve seating in V.I.P. Tent \$15 (for reservations call 335-9975 x2)



Saturday, December 8

#### Wreath Making Workshop

10am to 2pm. Meet at Museum to check-in. \$10 for materials. (Non-members \$25) Bring decorations to personalize your wreath plus clippers and any other tools you prefer to use. Bring own bag lunch.

## Maintenance Projects

Thanks to the support of our members, visitor donations, and shop sales, Hui o Laka makes enough of a profit every year to put some TLC back into our hardworking buildings. We use our low vacancy and slower traffic periods at the CCC Camp and Museum to maintain and improve our facilities.

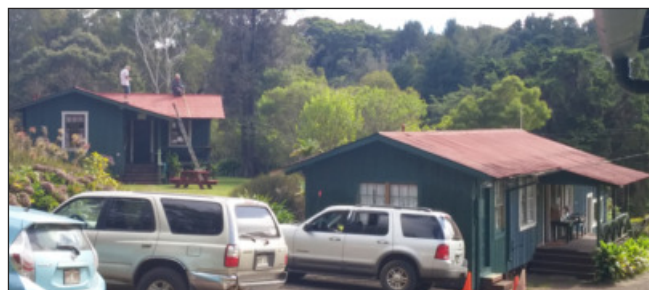
Waimea Plantation Cottages donated a stainless-steel countertop that was installed in the mess hall kitchen this spring by Alby Schraepfer. The kitchen then received a paint job. The mess hall project started two years ago beginning with the library end. New windows were installed thanks to the Historic Hawai'i Foundation's Freeman Foundation funds.

The presence of rats are an issue in places where people and food are present, especially at Kōke'e. An old-fashioned food safe with rat proof screen was installed in the pantry for drygoods to free up the refrigerators when we have lots of groups in house. We've been stricter with trash accumulation because we've had some issues with way too much trash generated by some of the groups. The pantry has been stocked with enough dishes for the whole camp.

We will need to replace the kitchen double sink in the future with a stainless-steel version. The current sink is galvanized steel and has serious rust pits and because of the metal pots and pans banging in the sinks, the painted surfaces keep chipping. At some point it will rust through.

Future paint projects include the interior of Barracks C (Dreamers) and Orchard Cabin as time and lack of occupancy allow. Orchard already has new beds which is a big improvement.

We were awarded a Grant-in-Aid project for reroofing some of the CCC Camp roofs. We haven't received a contract yet but will be having to match the \$25,000 that will come



Orchard and Admin buildings in need of new roofs.



Photos, clockwise from left: new CCC Camp sign by Gizmo Grafix, Mess Hall pantry, mess hall dining and livingroom, library with ping pong table and CCC Camp exhibit, new stainless-steel countertop, and stoves moved under the hood.

from the state with cash and inkind (volunteer) labor. The repairs are more costly than usual because the buildings are on the historic register and follow stricter standards.

In time for Banana Poka, Brad Soria, our Kōkua Kōke'e coordinator and welder, made us a gate for the grass quad at the CCC Camp. It was purposely made light so our wahine can open and close the gate easily. It is a relief not to have to drag the heavy chain across the entrance anymore. As a fun element, he used three horseshoes to spell out CCC. We are looking for a copper or brass disk (maybe a platter) about 24-36" wide to torch a CCC emblem for the gate.

A firepit was completed with log seating. Waimea High School ROTC kids came up and helped set it up as well as clear the perimeter of the camp of blackberries. We still need to make a grill to fit it. We are asking people to provide their own firewood

and, a reminder, Kōke'e is not the place for bonfires. The firepit is to make a small fire to roast marshmallows on the coals, maybe do a little cooking, and keep warm while enjoying the stars and storytelling.

Four new picnic tables have been installed to replace the old ones. They don't last long in our damp environment. but are well used while they last.

Since August and September, visitors at the museum traditionally slack off after the big July crowds, so we scheduled the wheelchair ramp and porch painting. It has been almost two years since the floor in the museum was painted and it needs to be done again. At 90+ thousand people a year coming in the doors, it is no wonder the paint wears through! Since we are open every day we have to do it after we close in the afternoon in stages. Then we will install some new shop furnishings to better display some of the new inventory we've been working on. We hope to see you soon, and remember, our members receive 15% off in the gift shop during our festival days. Emalani is coming up in October!



Tree planting ceremony with The Ladies of Hālau Ka Waikahe Lani Mālie and E Pili Kākou honoree Coline Aiu.

## Kōke'e Tree Planting

Hui o Laka was invited to attend the 2018 E Pili Kākou workshops held in February at the Kaua'i Beach Resort. Queen Emma and her legacy on Kaua'i was being honored and Hui o Laka's presence was due to our role in hosting the annual Eō e Emalani i Alaka'i.

HoL Board President Billi Smith spoke about Queen Emma's life and legacy during the Saturday program. Trustees Kay Koike, Sue Boynton, and Earl Hunter participated as well as Executive Director Chris Faye. As part of the program, Kumu Hula Coline Aiu

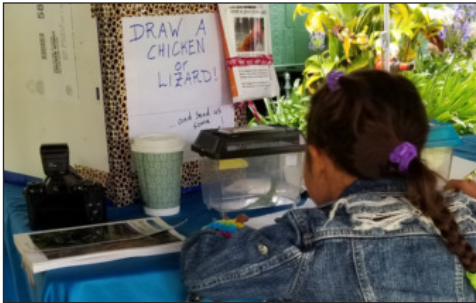
was honored in memory of her mother Kumu Hula Maiki Aiu-Lake. A very beautiful 'ōhia tree was presented to Coline to be planted at Kōke'e. The tree was provided by the Nature Conservancy from seeds collected not far from the Kōke'e Museum. E Pili Kākou is put on by the Lauākea Foundation with Hālau Ka Waikahe Lani Mālie and Hālau Kahulaliwai.

Blaine Kia and La'amea Almeida selected a spot near the entrance to the Nature Trail in what will become a "Kumu Garden." It will

be the first of many plants, special to the hula that will be added to the Nature Trail and Kumu Garden as part of "E Pili Kākou."

On Saturday, June 3, the 'ōhia tree was planted with all due ceremony by Coline Aiu. The little tree quivered in anticipation and danced in the cool mountain air once it was planted. As the tree was being planted, we imagined how Queen Emma would have enjoyed this tree planting as she loved plants and cultivated many at her various homes.

## Banana Poka



It was a half and half day. Half rain and half dry with some sun here and there. Still, a lot of people came out to support the 29th Annual Banana Poka RoundUp! We had basket and walking stick makers, colorful forest birds flying around, serious and not so serious exhibits and everyone learned a lot of interesting things. Russell da Rooster's crowing contest was a little soggy, but competitive. The music was awesome. We had Nick Castillo, Darryl Gonzales & Greg Nobriga, Paul Togioka, and Wailoa plus Da Sound Man who made it even more special. The silent auction had some surprises and a lot of interest. A model of the "Mighty Mo" donated by Earl Hunter went to a good home.

We couldn't have done it without all the support from our loyal business donors. Our fundraising goals were met despite the rain

**2018 Roundup  
Banana Poka**

Hui o Laka would like to thank all the participants, volunteers, and donors for helping to create a wonderful mauka festival on May 27th. We had a little rain, some sun, beautiful music, and lots of happy keiki up at the Koke'e Civilian Conservation Corps Camp at Koke'e State Park!

**Our Major Event Sponsors**

**Hawai'i Tourism Authority & County of Kaua'i**

<ul style="list-style-type: none"> <li>Aloha Exchange</li> <li>Angela Headley Gallery</li> <li>Aunty Liliko'i</li> <li>Banana Patch Studio</li> <li>Blue Dolphin Charters</li> <li>Brennecke's Beach Broiler</li> <li>Nick Castillo</li> <li>Creative 'Ohana</li> <li>DLNR State Parks</li> <li>Eating House 1849</li> <li>Dennis Fujimoto</li> <li>Darryl Gonzales &amp; Greg Nobriga</li> <li>Garden Island RC&amp;D Forestry Committee</li> <li>Garden Isle Portable Toilets</li> <li>Garden Island Security</li> </ul>	<ul style="list-style-type: none"> <li>Gaylord's Restaurant</li> <li>Habitat Restore</li> <li>Holoholo Charters</li> <li>Ho'okipa Cafe</li> <li>Hukilau Lanai</li> <li>Earl Hunter</li> <li>Hui o Laka Board of Trustees</li> <li>Hui o Laka Volunteers</li> <li>Ishihara Market</li> <li>Island Adventures</li> <li>Kalahao Coffee</li> <li>Kaua'i ATV</li> <li>Kaua'i Backcountry Adventures</li> <li>Kaua'i Beer Company</li> <li>Kaua'i Chocolate</li> <li>Kaua'i Kookie Company</li> </ul>	<ul style="list-style-type: none"> <li>Kaua'i Fine Arts</li> <li>Kaua'i Forest Bird Recovery Project</li> <li>Kaua'i Invasive Species Committee</li> <li>Kintaro's</li> <li>Kokua Koke'e</li> <li>Koke'e Leaseholders Association</li> <li>Koke'e Resource Conservation Program</li> <li>Koloa Zipline Tours</li> <li>Kuapahi 'Ohana</li> <li>KUPU Hawai'i</li> <li>Lappert's Coffee</li> <li>Larry's Music</li> <li>Lavalava Beach Club</li> <li>Lihu'e Nail Salon</li> <li>Lush Salon</li> <li>Maka Imports</li> <li>Malie Organics</li> <li>Malie Smith</li> <li>Jan Martinez</li> <li>Michigan State University</li> <li>Laurie Nakama</li> <li>National Tropical Botanical Gardens</li> <li>Natural Pet Hawai'i</li> <li>Nukumoi Surf Company</li> <li>Linda Oshiro &amp; Dardanelle Kauuwi</li> <li>Outfitter's Kaua'i</li> <li>Pacos Tacos</li> <li>Princeville Ranch Adventures</li> <li>Patrice Pendarvis</li> <li>Pizzetta</li> </ul>	<ul style="list-style-type: none"> <li>Puuhina Designs</li> <li>Safeway</li> <li>Save Our Shearwaters</li> <li>Saydi Silva</li> <li>Skyline Eco Adventures</li> <li>Storybook Theatre of Hawai'i</li> <li>Mike Teruya</li> <li>The Beach House Restaurant</li> <li>The Blue Orchid</li> <li>The Right Slice</li> <li>The Sound Man - Raymond Duarte</li> <li>The Wine Shop</li> <li>Tire Warehouse Kaua'i</li> <li>Paul Togioka</li> <li>Under the Sea Gallery</li> <li>Ventures Associates</li> <li>Veronica Jewelry</li> <li>Wailoa</li> <li>Walmart</li> <li>Sharon Weber</li> <li>WKBP - Historic Waimea Theater</li> <li>Wrangler's Steakhouse</li> <li>Diane Wry</li> <li>YWCA</li> </ul>
--	---	---	---

We hope we didn't miss anyone!

and the hard work of our Trustees. The silent auction crew, headed by Lorraine Wichman, and the Snack Booth crew, headed by Myranda Kuapahi, helped offset the expenses of holding the educational

fair. The staff were out in force as well including Linda Oshiro and her basket weaving crew. It was also supported by The County of Kaua'i. Mahalo to attendees, exhibitors, entertainers, and sponsors!

**Endowment Fund Balance as of 7-31-2018**  
**\$43,762. Endowment Donors past 6 months**

\$5,000 David Pratt  
\$1,500 Joan Pratt

**Hawai'i Tourism Authority Funding**

\$ 7,150 Banana Poka 2018  
\$18,810 Emalani Festival 2018  
\$16,000 Kōkua Koke'e 2018

**Donation towards Emalani Festival 2018**

\$1,000 Mr & Mrs. Thomas Reveley

**Donation towards Kōke'e Museum Exhibits**

\$3,250 Waimakua Foundation (Mary S. Rice)

**Unrestricted Donations**

\$5,000 EHW Broadbent Foundation  
\$3,000 Waimakua Foundation  
\$3,000 Joan Pratt  
\$1,000 Mr. & Mrs. Thomas Reveley

**Membership is very important to our organization. Here we gratefully acknowledge memberships at the Patron Level or higher the past year to July 31, 2018**

**Patron Members (\$100+)**

Nolan & Jennie Ahn  
William Albritton  
Sharee Anderson  
Greg Askew  
Laura Bibby  
Sue Boynton  
Donn Carswell  
Brian Carter  
Chucky & Pammy Chock  
Lillo Crain & 'Ohana  
Puna Dawson  
Marlene & Rett Donnelly  
Marina Drummer  
Martha & David Elpern  
Patricia Engelhard  
Jeremiah Felsen  
Clyde Furumoto  
K. Gally & F. Hay  
Karen & Cliff Harlow  
Havaiki, LLC  
Mary Hawkins  
Jessie Hill  
Sarah Hill  
Sandy Howatt  
Pat & Earl Hunter  
Dean & Mattie Jamieson  
Renee Jenkinson  
Sabra Kauka  
Ann Kennedy  
Kay Koike  
Kōke'e Lodge  
Martie Law

Stephen Leon  
Leia Makaneole  
Tim & Cathy McKenna  
Tom Mendes  
Dee Morikawa  
Mary Neudorfer  
Ken Ogilvie  
Judy Oliver  
Darlene Palama  
Patrick & Leah Periera  
Charlie & Deborah Pratt  
Wayne & Katherine Richardson  
Mike & Diana Shaw  
Patsy Sheehan  
Cheryl & Michael Shintani  
Billi Smith-Topp & 'Ohana  
Derlene Sameda  
Wayne & Jean Souza  
Stacey Torigoe  
Matthew Vidaurri  
Dean Wakamoto  
Melinda Walker  
Jonathan Wichman  
Victoria & Randy Wichman  
Gaylord & Carol Wilcox  
Craig Wisen  
Heuionalani Wyeth  
Martha Yent  
Melinda Yomen

**Patron Members (\$200+)**

Karen Harlow  
Laurie Ho  
Thomas King, Jr.  
Elizabeth Piccard  
Charles & Jennie Wichman  
Chipper & Hauoli Wichman

**In Memory of Annette Cassidy**

Richard & Julie Haviland  
M. Parker & C. Zorne

**In Memory of Betty Alexander**

Joan Pratt

**In Memory of Gale Fisher Carswell**

L. Antorellis & W. Weinstein  
Sue & Ed Barberini  
Corrinne Beck  
WC & Patricia Bergin  
Beryl Blaich  
Thomas Blankley  
Paula Boyce  
Michael Byran & Karen Takara Byran  
Charley Cooke 'Ohana  
Lawrence & Lori Dill  
Mal & Pam Dohrman  
Drammer Family Trust  
Peter Drewliner  
Lance Dunbar  
Jerry & Charleen Dunn  
Mr & Mrs Lindsay Faye, Jr.  
William Fontana Jr.

Martin & Isa Fores  
George & Elizabeth Freeland  
Mark Gonzales  
Philip & Linda Green  
Frank Hay  
Susan Hemmings  
Kelly Rice Hudson & Gary Hudson  
Anna Karen Johnson  
W. Lani Pascua Kauai  
Edward & Lilli Kawamura  
Susan Kelsey  
Geri Lambert  
D. Moore & G. Pope  
Sandra Nishek  
Happy & Dick Parks  
Norman Parr  
Mary Paterson  
Ronald Peeren  
Mark Perry  
Joan Pratt  
Michael & Leila Rodger  
Lisa Marie Roed  
T. Leilani Romas  
Bill Seager  
Bob & Linda Shadiow  
Richard & Loree Sloggett  
Lee & Mary Kay Sommers  
Ed & Cynthia Sorenson  
Gregg Hiroshi Takara  
Winston Welborn  
Mike & Dottie Williams  
Susan Wilson  
Douglas Yoneji

*If you don't see your name here or find it misspelled, let us know. The cut off date was July 31st for this newsletter.*

**How to Find Us!**

By Phone:  
Hui o Laka 808-335-9975  
Kōke'e Museum 808-335-3353  
Email: [info@kokee.org](mailto:info@kokee.org)  
Web: [www.kokee.org](http://www.kokee.org)  
Facebook: Kokee Museum Now!

**Reservations for the CCC Camp**

Check out the "CCC Camp" tab on the bar and look at "Staying at the CCC Camp" at [www.kokee.org](http://www.kokee.org). We have online calendars for each unit, a rate sheet, reservation forms and even a "what to bring to camp" list. This is a State Park facility so there is a liability waiver form as well! You do have to be a member of Hui o Laka to stay at the camp. Members at the individual and family levels can rent bunks or a cabin, but you must be a patron member or higher to rent for groups. Before calling for availability do check the calendars as it makes things easier for everyone. We don't do weddings and parties. Educational uses and retreats are welcome.